

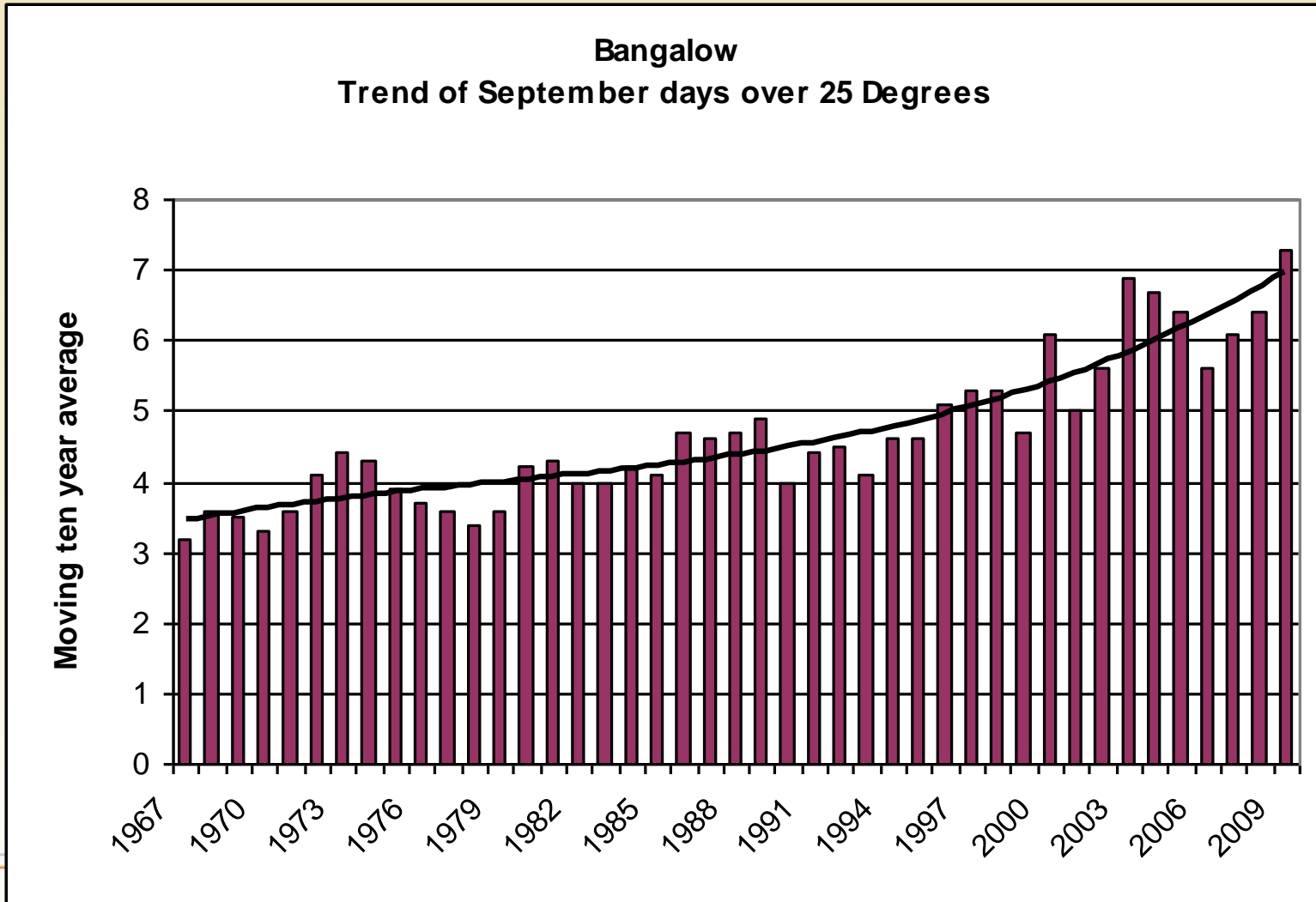


Industry & Investment

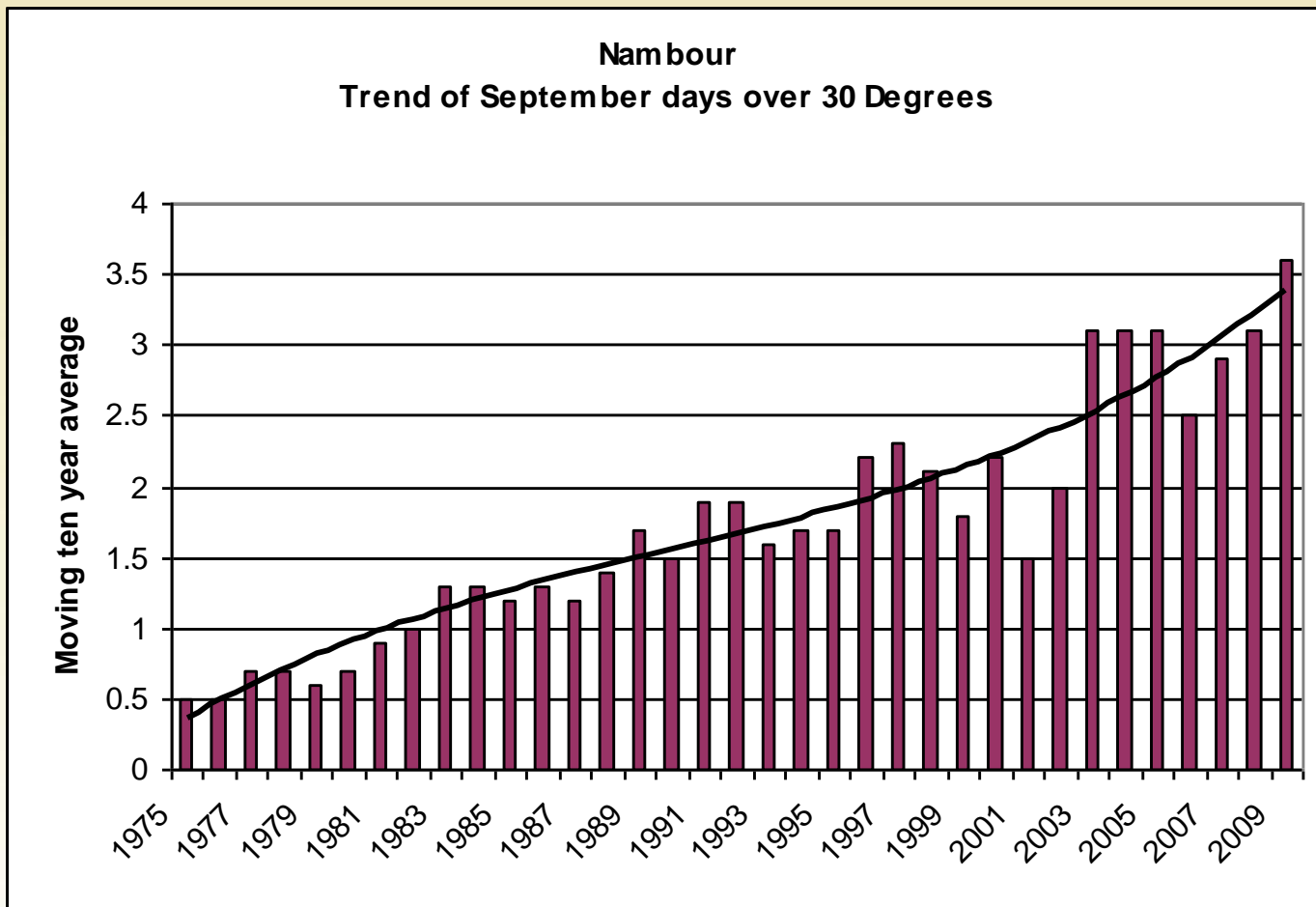
Partners in the profitable and sustainable development of agriculture, fisheries, forests and minerals in New South Wales



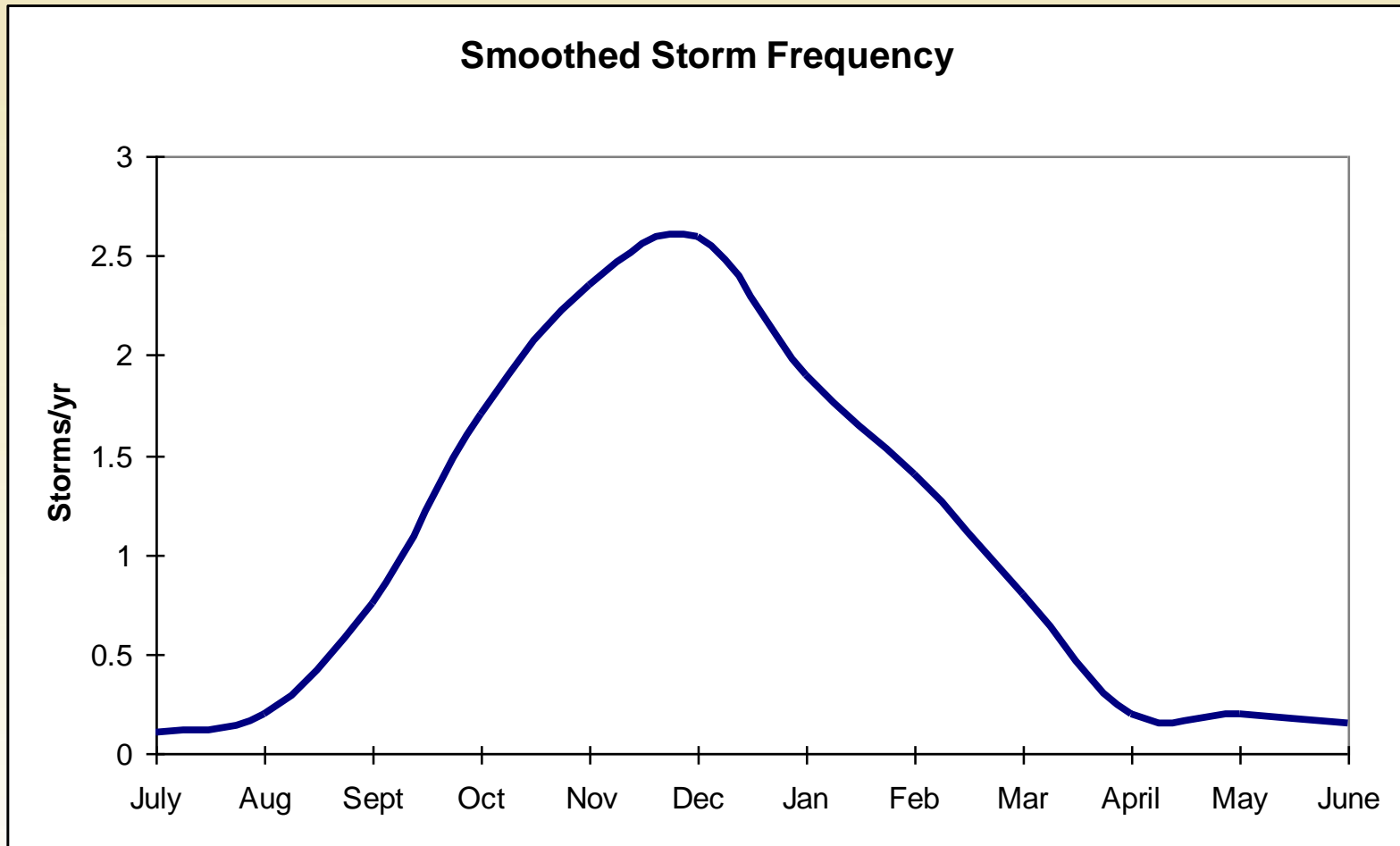
Local Changes- Spring



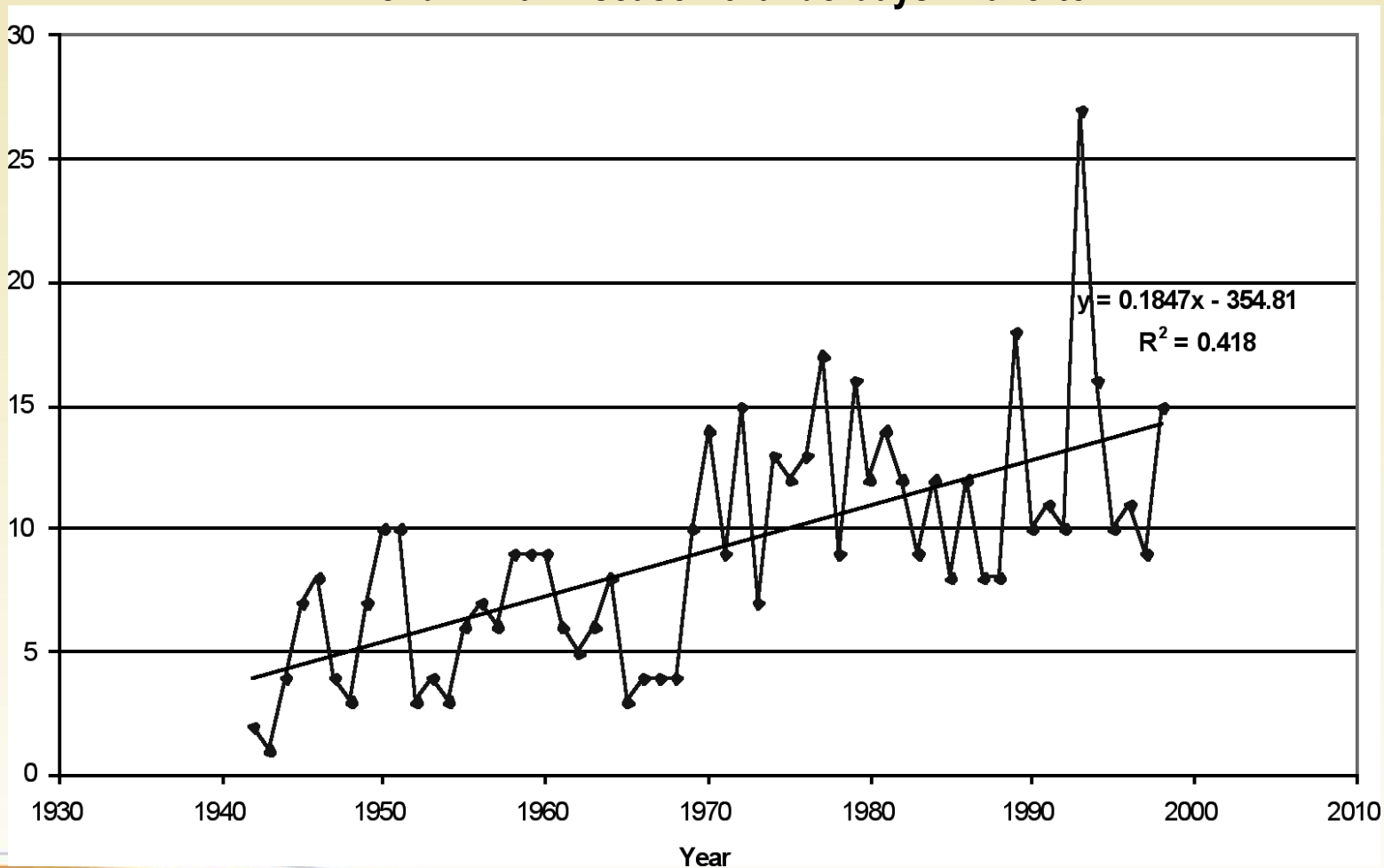
Local Changes



Northern Rivers Storm Frequency

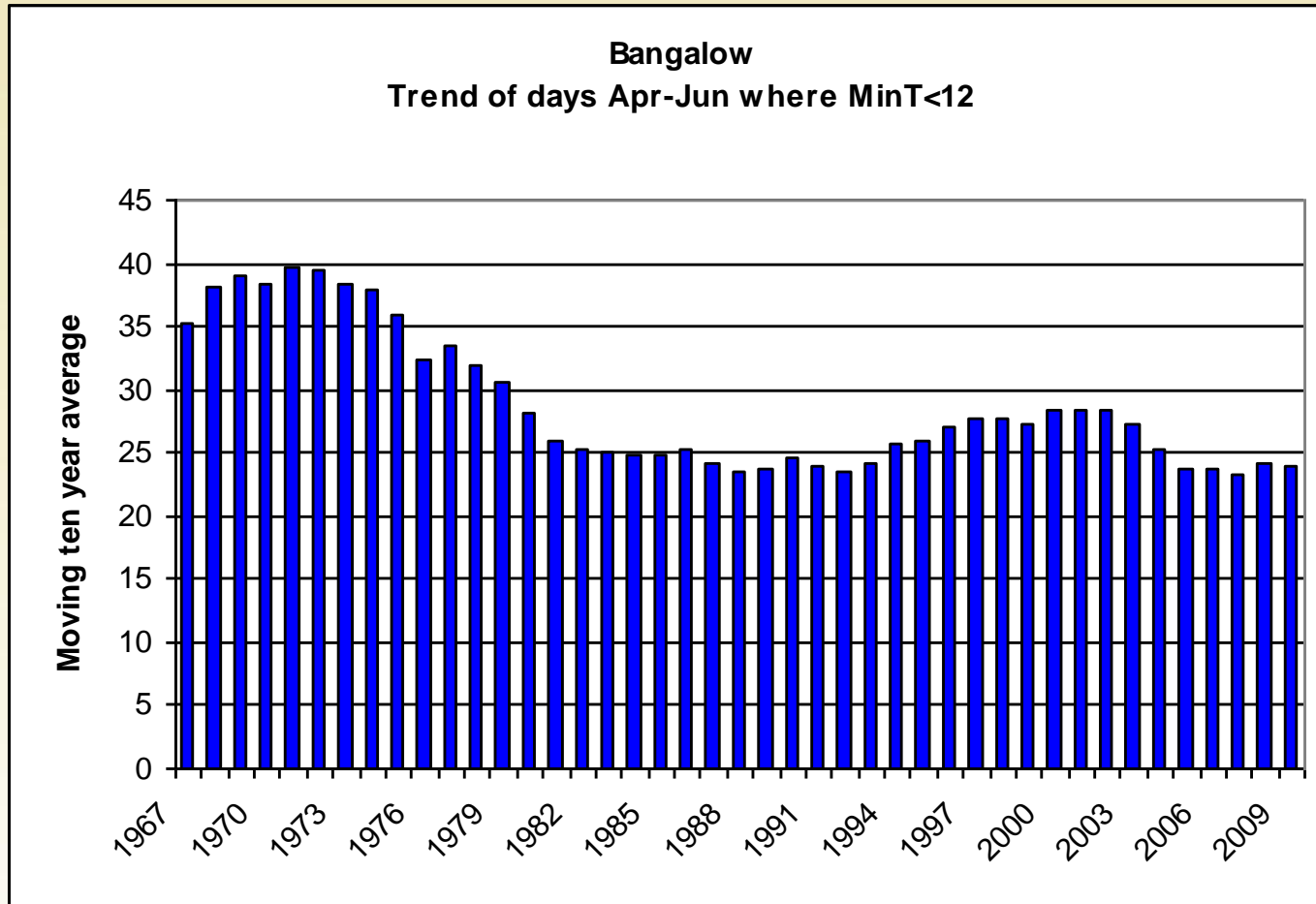


Trend in warm season thunderdays - Laverton

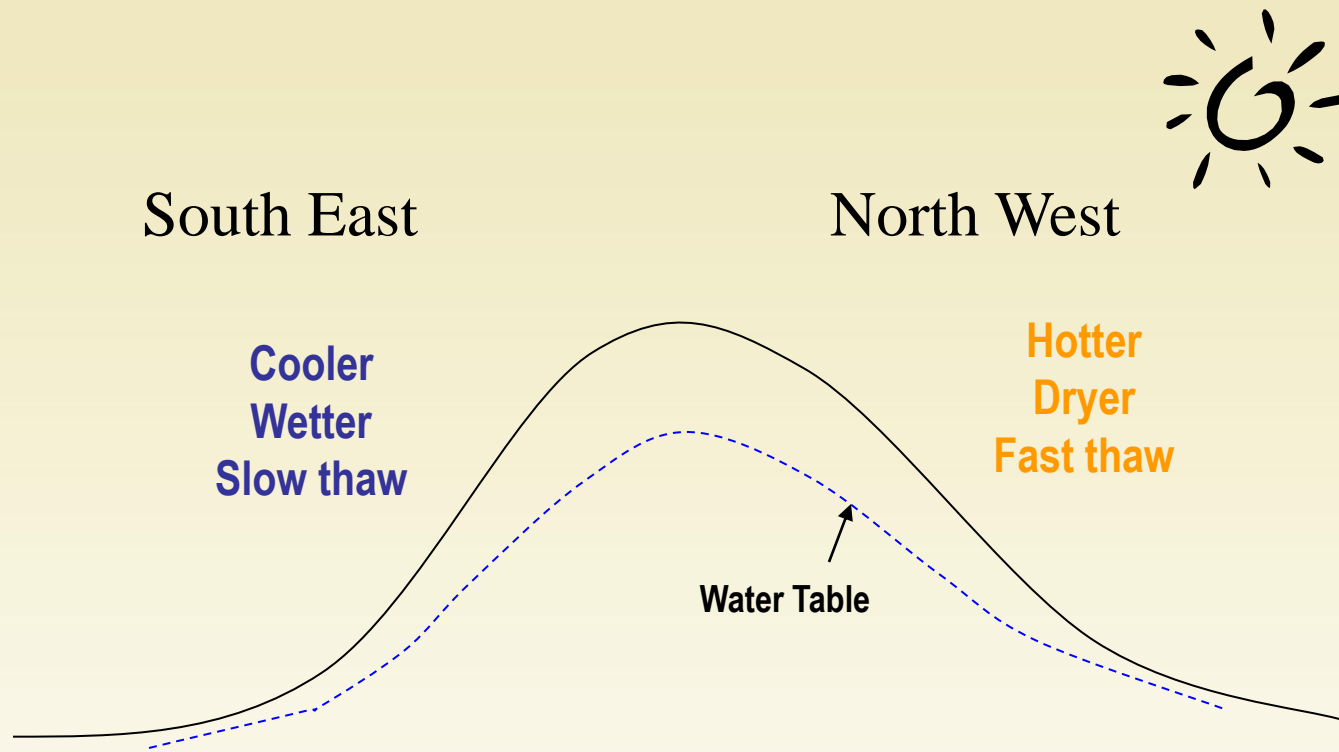


Davis, Walsh Aust Met Mag V57 (2008)

Local Changes – Autumn Chill



Landscape Influences

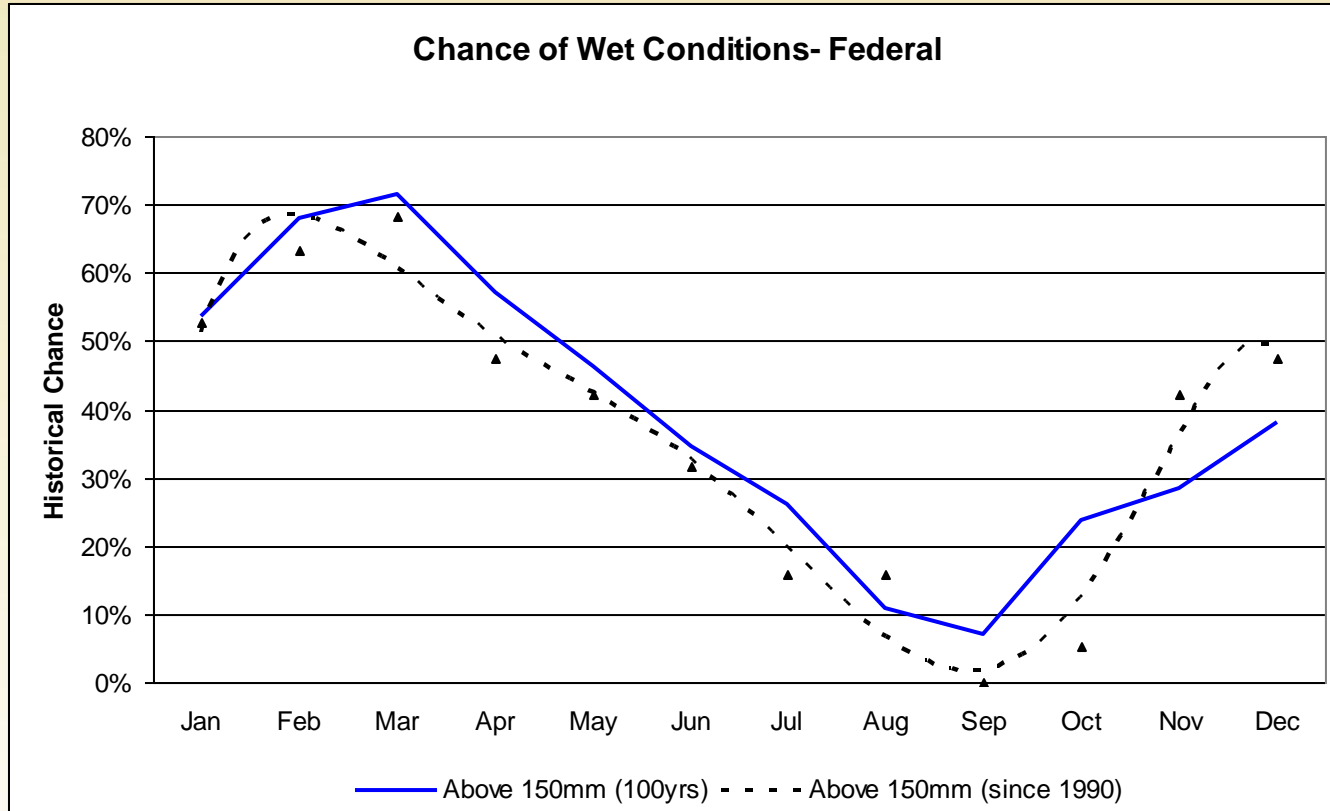


Concept Figure

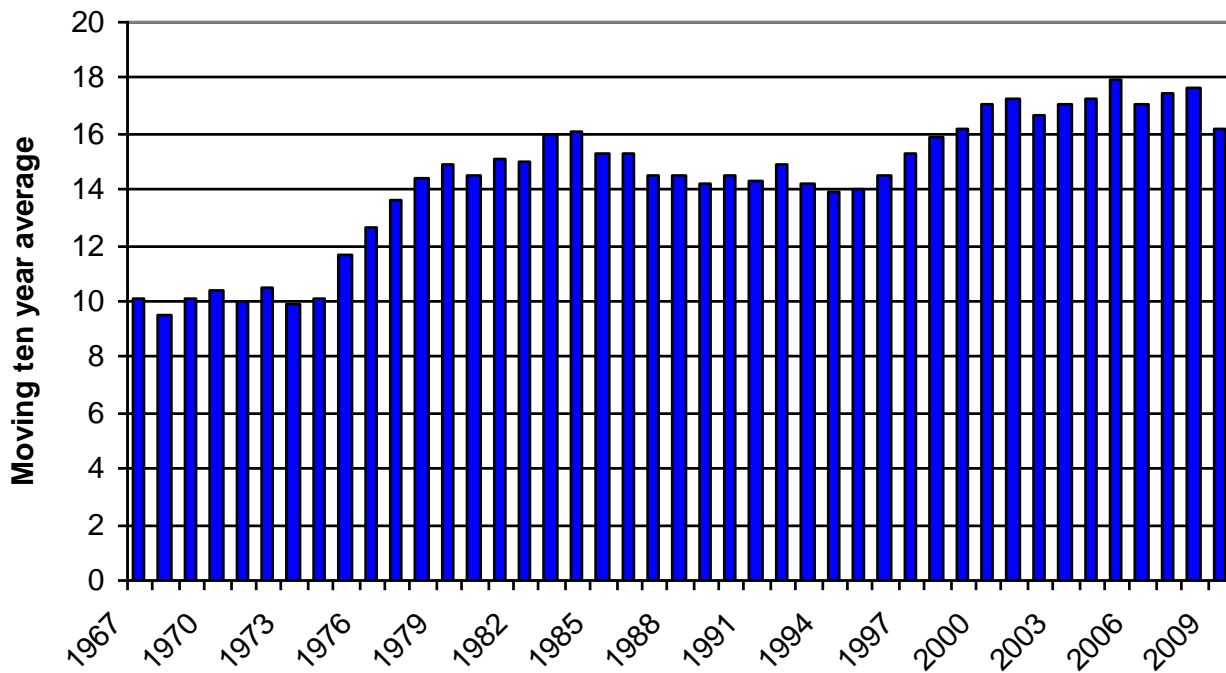
Drying Order



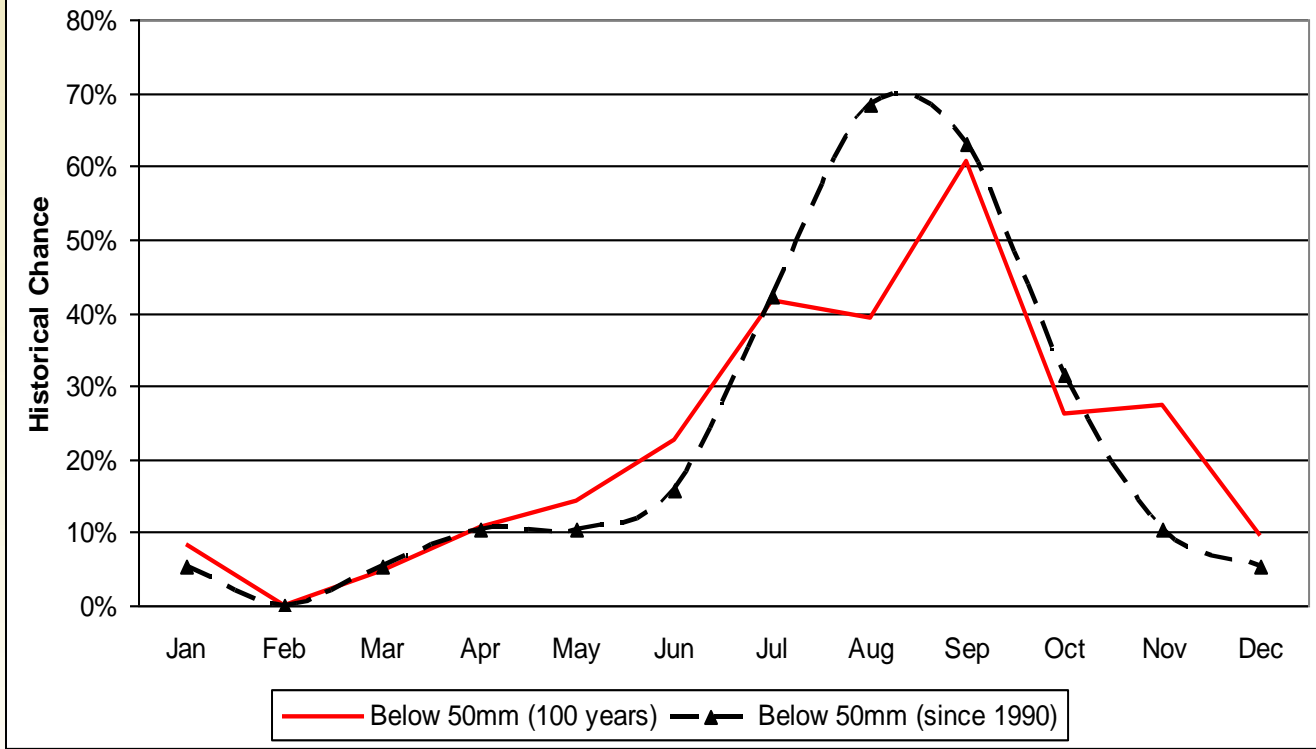
Wet Conditions



Bangalow
Trend of rain days in November

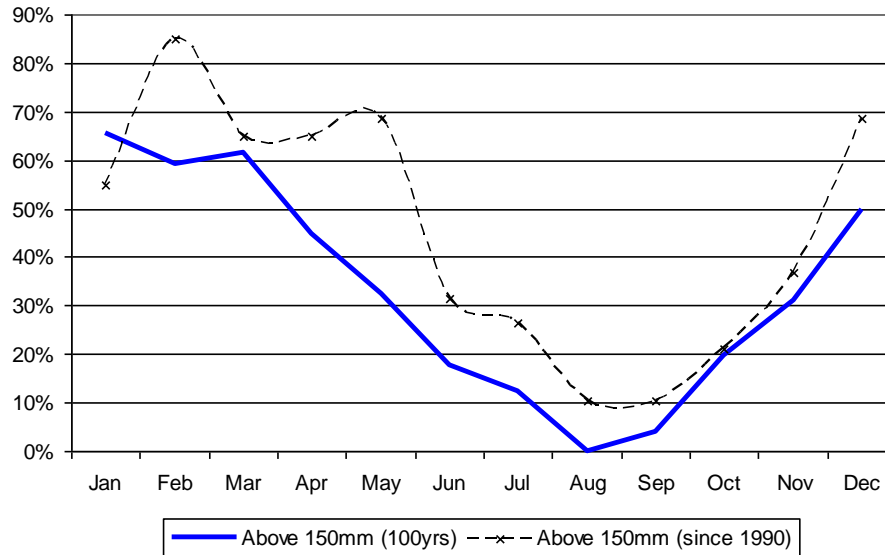


Chance of Dry Conditions- Federal

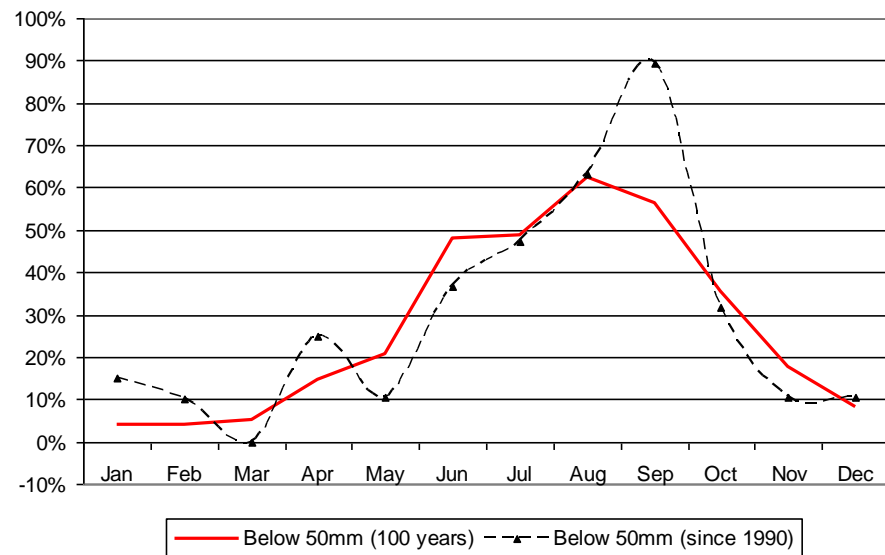


Nambour

Nambour - Wet Conditions



Nambour - Dry Conditions



Changing Seasons

**Later
Wetter**

**Shorter
Drier
Later Frost**

**Earlier
Drier start
Pests/Weeds**

**Longer
Hotter
Wetter**

More storms and fires



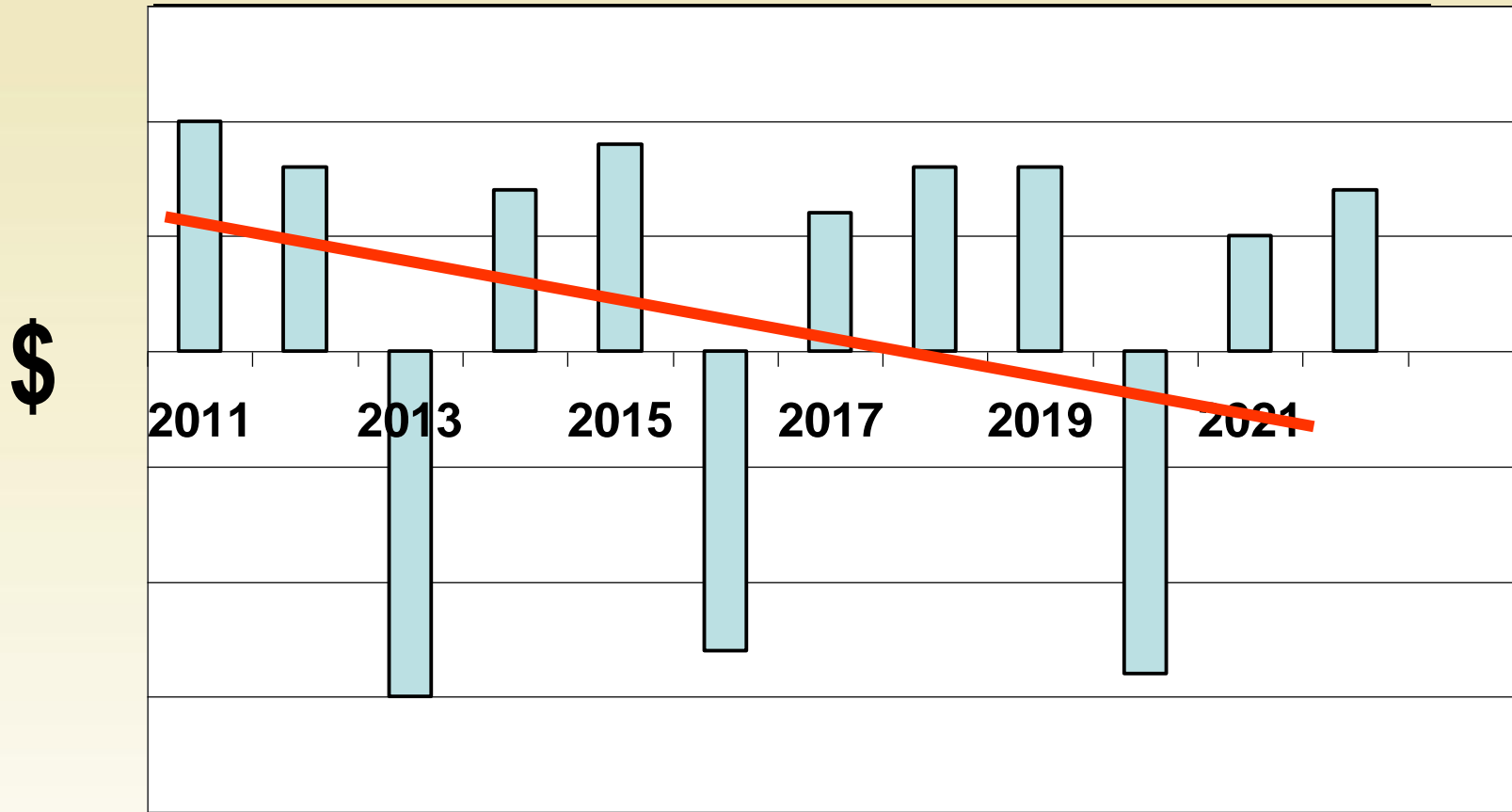
Autumn

Winter

Spring

Summer

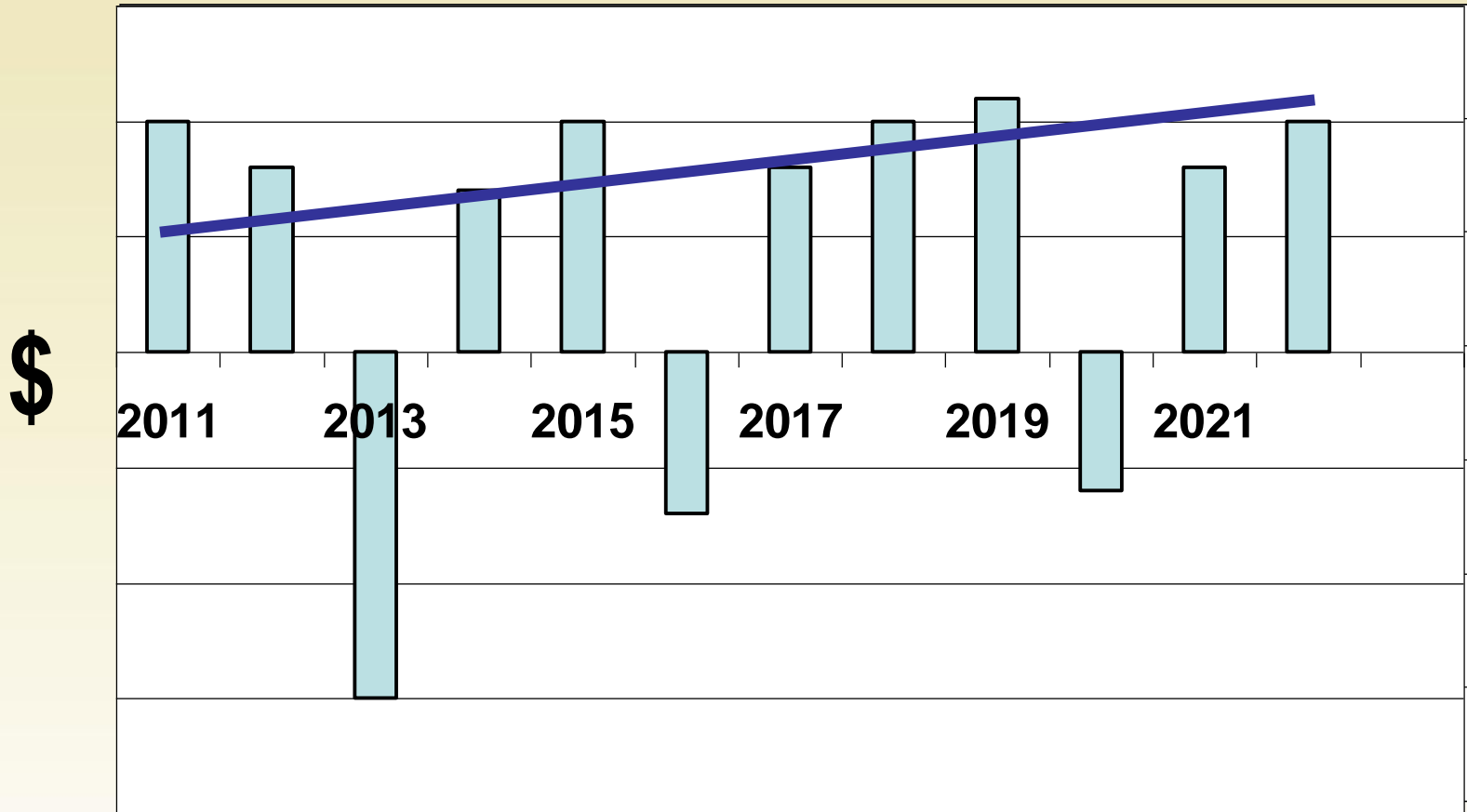
Economic Impacts



The main impact is not from a slow change in average conditions but from a change in the frequency of extreme conditions.

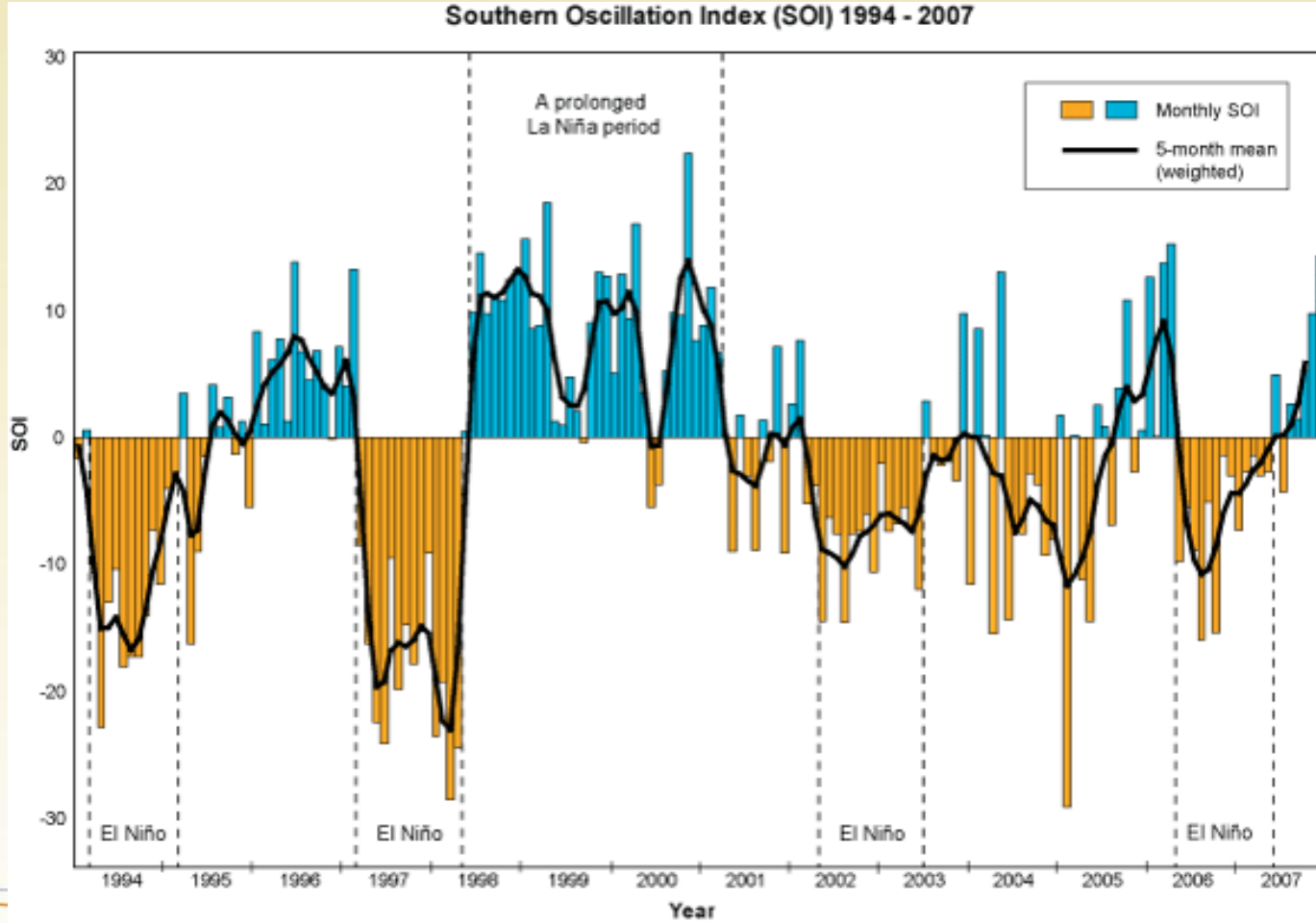
Concept Graph

Adapting to Climate Change

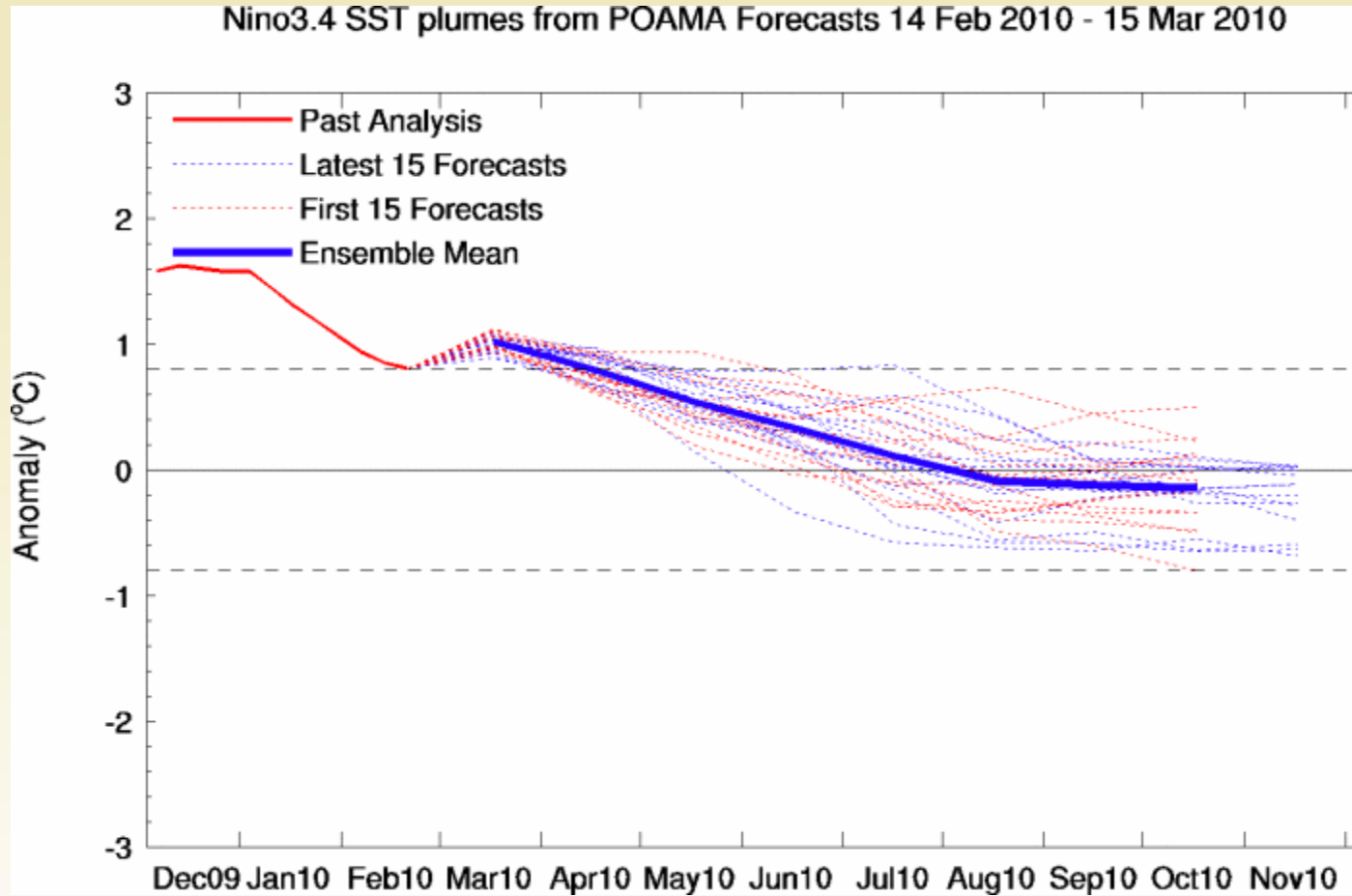


Consider the bigger picture

Concept Graph



Long Term Forecast





Agriculture Services

Rainfall

- Rainfall ranges
- 3 month outlook
- Forecast rainfall
- Latest radar image
- Latest rainfall
- Recent rainfall
- Recent rainfall tables
- Recent rainfall report
- Recent drought report
- Average rainfall
- Rainfall trends

Cloud

- Temperature
- Wind
- Pressure
- El Niño & La Niña
- Humidity
- Evaporation
- Sunshine

- Forecasts & Observations
- Climate Data Online
- Our Weather & Climate

Rainfall: Total Forecast Rainfall

Forecast for Thursday 8 April 2010 to Sunday 11 April 2010

[About forecast rainfall](#)

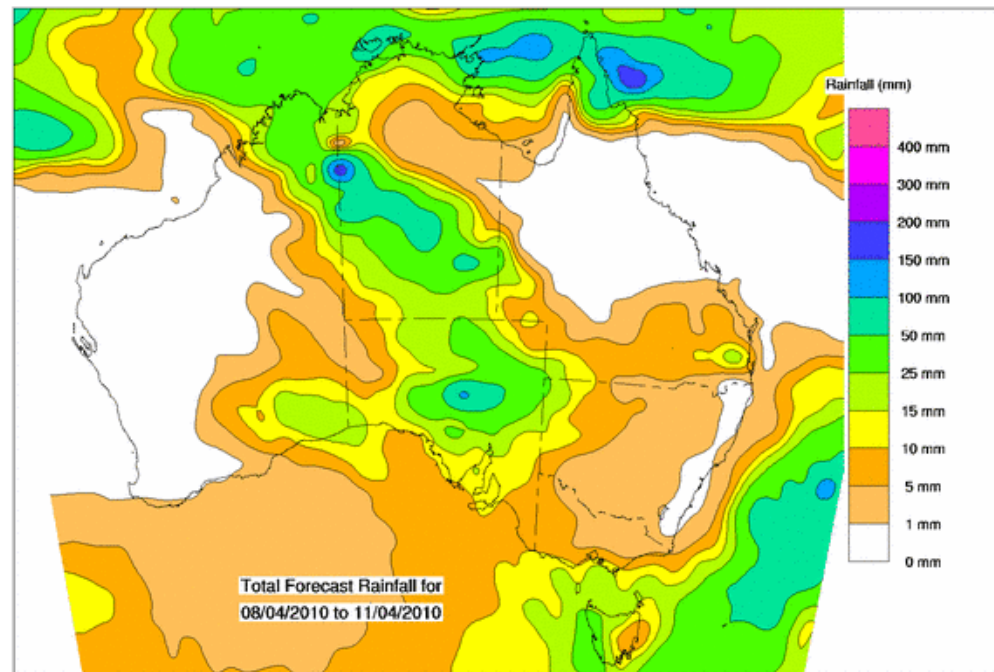
These rainfall forecasts are produced from computer models. As they contain no input from weather forecasters, it is important to also check the Bureau's local forecasts and warnings.

Controls

Map Forecast Rainfall Chance of Rainfall Total Forecast Rainfall

Date

- 08/04/2010 to 11/04/2010 - 4 day
- 12/04/2010 to 15/04/2010 - 4 day
- 08/04/2010 to 15/04/2010 - 8 day



© Commonwealth of Australia 2010, Australian Bureau of Meteorology

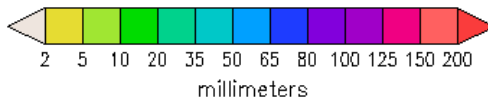
Issued: 07/04/2010

Flooding

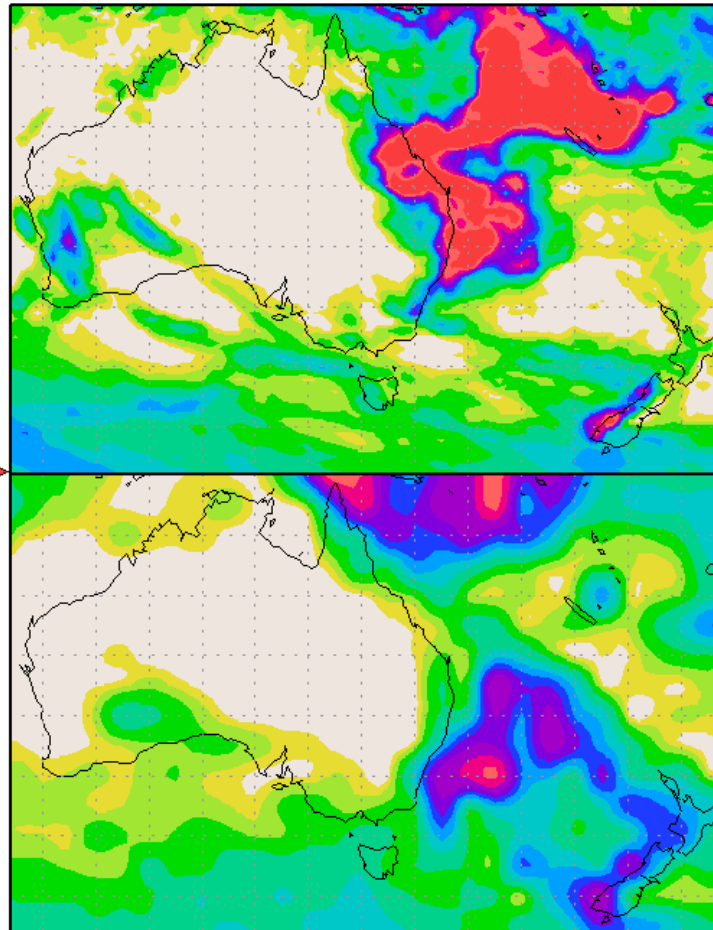
Precipitation Forecast

Precipitation (mm)
during the period:

Wed, 17 MAR 2010 at 00Z
-to-
Wed, 24 MAR 2010 at 12Z

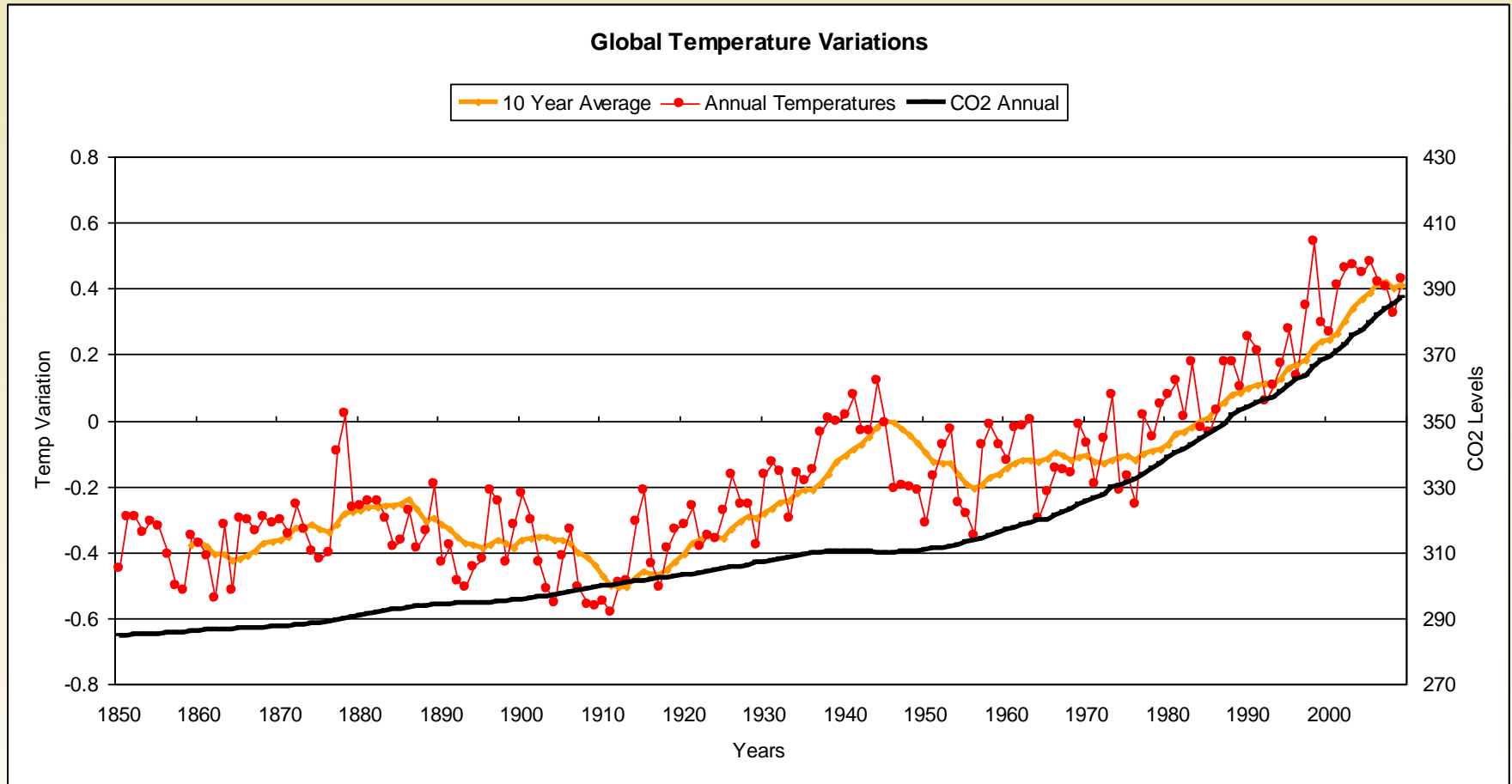


Thu, 25 MAR 2010 at 00Z
-to-
Fri, 02 APR 2010 at 00Z



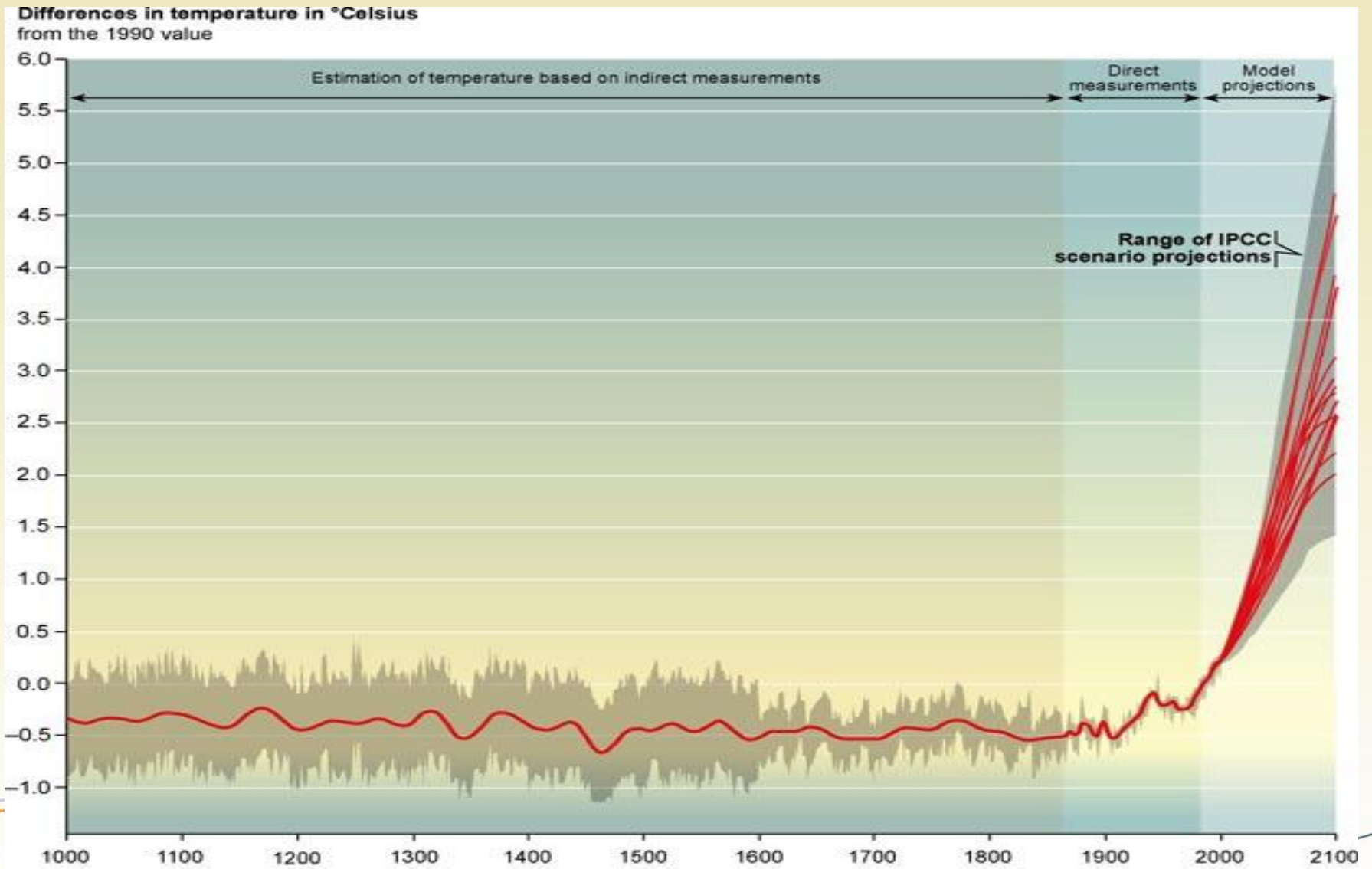
http://australianweathernews.com/forecast_ww_rain.htm

Temperature and Carbon Dioxide



The temperature variations from the Hadley Centre
 The post 1957 CO2 levels from the Mauna Loa centre
 The pre 1958 CO2 levels from ice core data by Wm.Robert Johnston

Global Warming Projections



Source: Intergovernmental Panel on Climate Change 2001

Key Points

- Make decisions based on the odds not on wishful thinking
- Plan ahead to reduce your financial exposure to weather risks (storms, late frost, early ripening, wet harvest).
- Use forecasting tools to adjust short term priorities