



Australian Government

Biosecurity Australia

Import risk analysis for fresh stone fruit from the USA



Darryl Barbour, Manager
Plant Biosecurity (Horticulture)

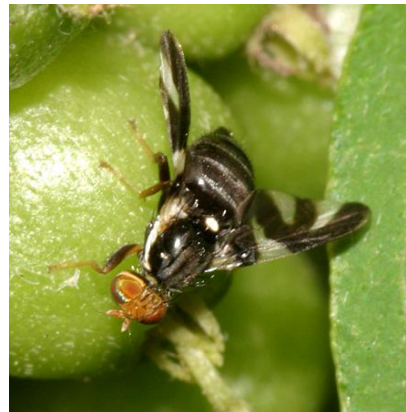
History

- Initiated following request by USDA
 - CA, ID, OR, WA
 - Apricots, nectarines, peaches, plums and inter-specific hybrids
- IRA commenced March 2008
 - Regulated: 24 month timeframe
 - Draft IRA report released April 2008
 - Eight stakeholders commented
 - Provisional final IRA report released March 2010

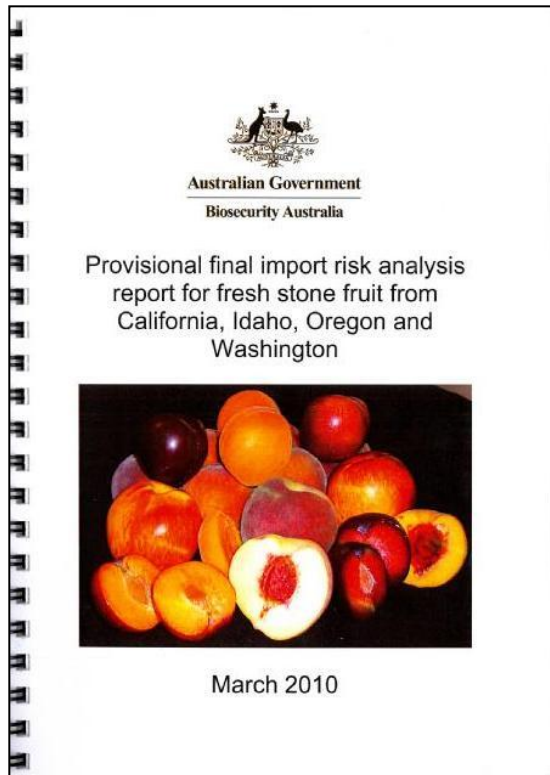


Risk analysis conclusions

- 406 pests considered
- 37 arthropods and 8 pathogens assessed
- 20 pests require quarantine measures
- Apple maggot
 - non-host status and area freedoms
- Peach twig borer
 - systems approach
- Fruitworms
 - orchard inspections and cull cuts
- Mealybugs, leafrollers, thrips
 - inspection and remedial action



Appeals



- Report was open to appeal until 16 April 2010
 - Two appeals lodged
- Appeals will be considered by the independent IRAAP
- Outcomes due 31 May



Addressing appeals

- IRAAP will deliver its findings
- Appeals may be upheld or dismissed
- Director of Animal and Plant Quarantine and the appellants will be advised
- May result in amendments to the final IRA report



Final IRA report

- After appeals have been addressed the final IRA report will be prepared
- Director of Animal and Plant Quarantine will be asked to make a determination
- Import permits may then be issued



Develop work plan

- Operational procedures will be finalised between Plant Quarantine (AQIS) and USDA
 - Preclearance arrangements
 - Inspection guidelines
 - Pest lists
- On-arrival / preclearance inspections
 - 600 fruit + 10% with microscopes

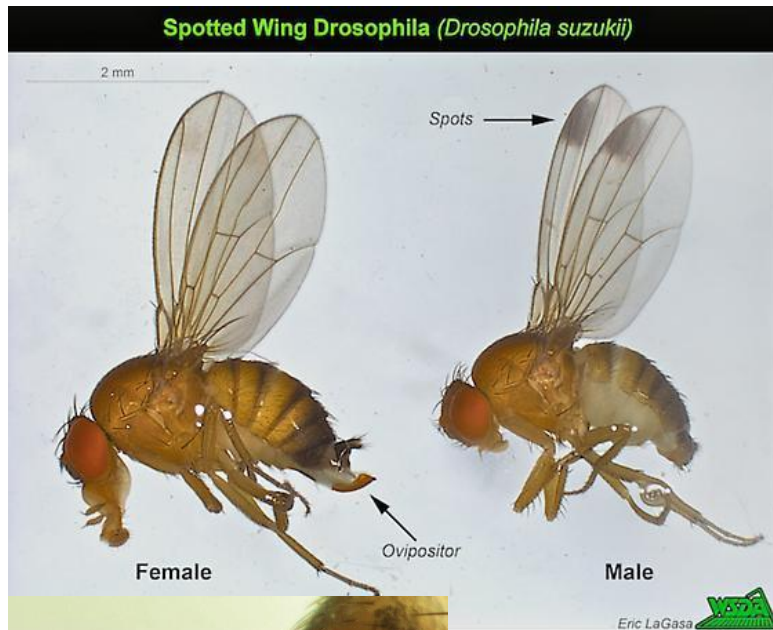


Timeframes

- IRAAP report 31 May
- Final IRA report June/July
 - Will be followed by the policy determination
- Import permits
 - US Season
 - CA – late April → early October
 - PNW – June → September
- Preclearance



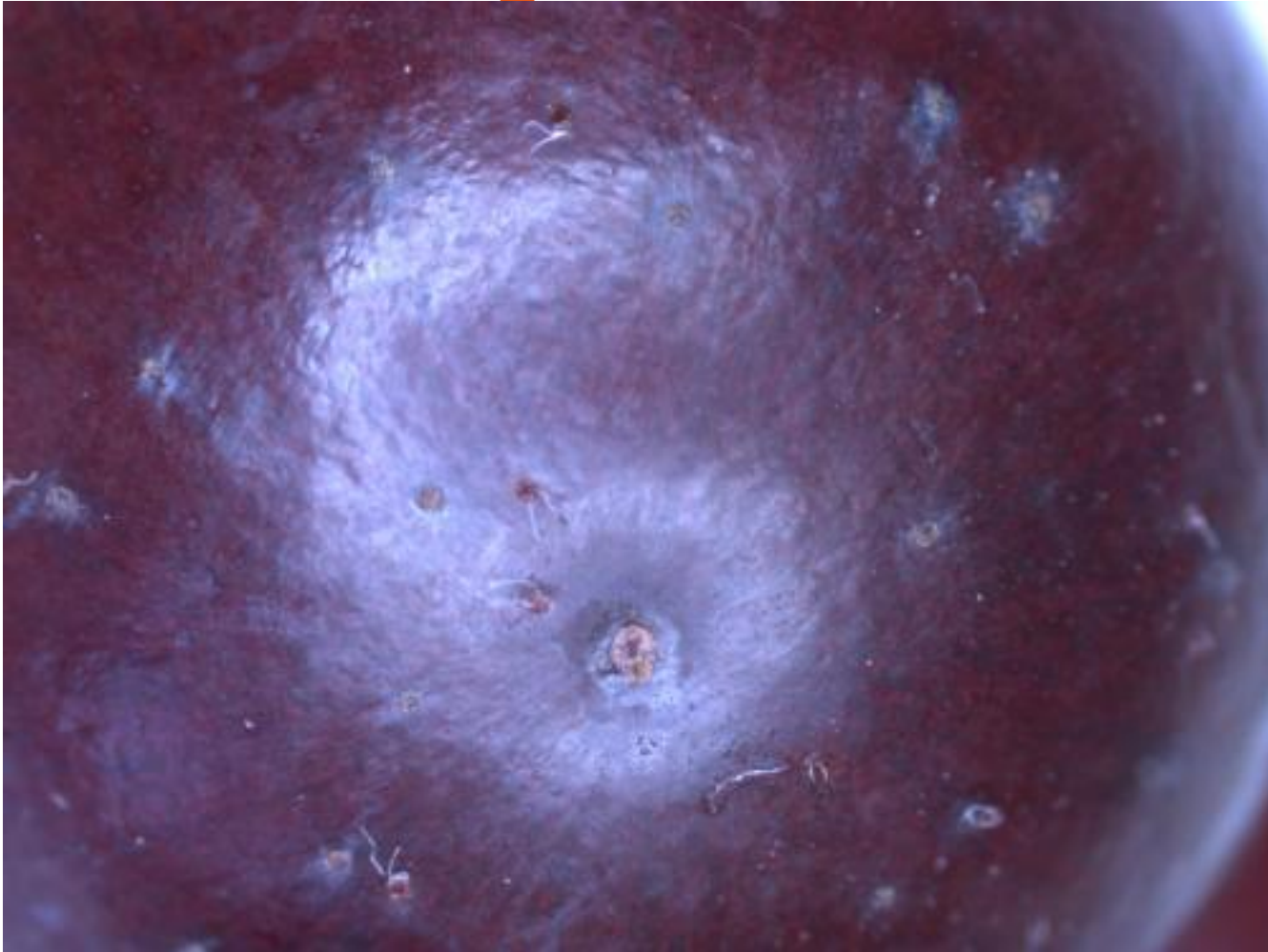
Drosophila suzukii



- In Sept/Oct 2009 reports emerged of a new pest attacking fruit
- Unlike other “harmless” *Drosophila*, the spotted wing drosophila (SWD) lays eggs in ripe and ripening fruit, especially soft and thin skinned fruits
- Cherries, grapes, strawberries, stone fruit



SWD Damage



PRA for *D. suzukii*

- Emergency measures introduced
- A risk assessment for *D. suzukii* on all risk pathways has been commenced
- Draft report during 2010
- Stakeholder consultation and comment period
- Final report
 - Will recommend ongoing measures for all affected / potentially affected commodities



Other import/export work

- Imports
 - USA
 - China (incl. cherries)
 - Japan
- Exports
 - USA (incl. cold treatment for cherries)
 - New Zealand (incl. cherries)
 - China (incl. cherries)
 - Taiwan
 - Japan
- www.daff.gov.au/ba/stakeholder

